



## Monday, 6<sup>th</sup> June 2016

11h30 - 12h15	Arrival and welcoming of the different delegations, registration of participants and handover of information bags
12h15 - 14h45	<b>b2fair SMART BENELUX BUSINESS MATCHING</b> Fine-tuning of the individual appointment schedules & start of the bilateral business meetings
14h45 - 15h15	<b>Welcoming of Invitees</b> (for those guests participating in the inaugural round table only)
15h15 - 17h00	<b>Inaugural Roundtable of the SMART BENELUX BUSINESS FORUM with a particular focus on circular economy</b> <b>Opening Speeches &amp; Ministerial Round Table Discussion in presence of:</b> <ul style="list-style-type: none"><li>• Mr Michel Wurth, President of the Chamber of Commerce of the Grand Duchy of Luxembourg</li><li>• H.E.Mr Jean Asselborn, Luxembourg Minister for Foreign &amp; European Affairs, President of the Benelux Committee of Ministers</li><li>• H.E.Ms Carole Dieschbourg, Luxembourg Minister for Environment</li><li>• H.E.Ms Marie-Christine Marghem, Minister for Energy, Environment and Sustainable Development of the Federal Government of Belgium</li><li>• S.E.Mr Henk Kamp, Minister of Economic Affairs of the Kingdom of the Netherlands (tbc)</li><li>• Mr Alain De Muyser, Deputy Secretary General of the Benelux Union</li><li>• Mr Romain Poules, CEO of PROgroup S.A., Chairman of the Luxembourg Ecolnnovation Cluster</li><li>• Vyncke Energietechniek NV, Belgium</li><li>• Mr Matthieu Bardout, Lead in Consulting Innovation, Circle Economy, the Netherlands</li></ul>
17h00 - 17h30	<b>Closing Speech</b> <ul style="list-style-type: none"><li>• Mr Frans Timmermans, 1<sup>st</sup> Vice-President of the European Commission and European Commissioner in charge of Better Regulation, Inter-Institutional Relations, Rule of Law and Charter of Fundamental Rights (tbc)</li></ul>
17h30 - 19h30	<b>*** Appetizer buffet with all participants ***</b>

## Tuesday, 7<sup>th</sup> June 2016

9h30 - 10h00	Welcoming of participants & coffee
10h00 - 12h30	Update of the individual appointment schedules and continuation of the bilateral business meetings
10h00 - 12h30 (in parallel)	<b>Thematic workshops &amp; Exchange of good practices</b> <ul style="list-style-type: none"><li>• <b>Workshop no.1</b> : Business models driving circular economy!</li><li>• <b>Workshop no.2</b> : Circular economy: The design as a starting point!</li><li>• <b>Workshop no.3</b> : How to finance circular economy?</li><li>• <b>Workshop no.4</b> : The concept of Smart cities.</li></ul>
12h30 - 13h30	<b>*** Networking Lunch among the participants ***</b>
13h30 - 16h30	<b>Continuation of the bilateral business meetings</b> (for the participants not attending the company visit)
13h30 - 16h30	<b>Visit of the company TARKETT in Lentzweiler : From the economic concept towards a competitive and responsible company strategy</b> 13h15: Departure of the bus to Lentzweiler 15h45: Bus transfer back to the Chamber of Commerce
16h30	<b>Farewell Drink and closing of the forum</b>

## Participation fees

- **Participation in the forum (opening round table discussion, thematic workshops, company visit, bilateral business matching: 99.00 EUR (1<sup>st</sup> company representative)**
- **For any additional company representative: 50.00 EUR**

To register for the forum and for further information concerning the practical unfolding of the event as well as all the other additional services offered, we invite you to visit the official website of the event:

[www.b2fair.com/beneluxforum2016](http://www.b2fair.com/beneluxforum2016)  
[www.een-matchmaking.com/beneluxforum2016](http://www.een-matchmaking.com/beneluxforum2016)

If required, personal interviews can also be arranged on specific request.

**Registration deadline: 31<sup>st</sup> May 2016**

## Practical information

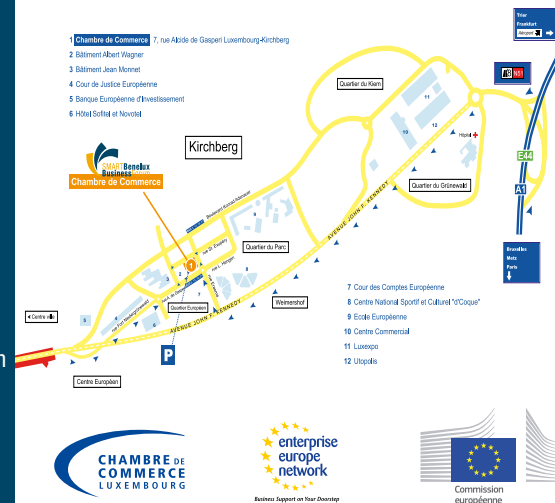
**Dates:** 6<sup>th</sup> & 7<sup>th</sup> June 2016

**Venue:**  
Chamber of Commerce  
of the Grand Duchy of Luxembourg  
7, rue Alcide de Gasperi  
L-1615 Luxembourg

**Contacts:**  
Chamber of Commerce  
of the Grand Duchy of Luxembourg  
Enterprise Europe Network-Luxembourg  
7, rue Alcide de Gasperi  
L-1615 Luxembourg  
Phone: +352 42 39 39 333  
Fax: +352 43 83 26  
E-mail: [benelux@cc.lu](mailto:benelux@cc.lu)  
[benelux@b2fair.com](mailto:benelux@b2fair.com) • [een@cc.lu](mailto:een@cc.lu)  
Ms Annelore Domingos • Ms Carole Munhowen  
Mr Niels Dickens

**Free Parking:**  
Parking house of the Chamber de Commerce  
(entrance at rue Alcide de Gasperi)

## Access Plan:



**Striving towards a more responsible future:**  
The Benelux countries on their road to a more intelligent and sustainable economy.

**Date:** 6<sup>th</sup> & 7<sup>th</sup> June 2016

**Venue:** Luxembourg  
Chamber of Commerce

**Organiser:**



**175<sup>th</sup> 1841-2016**  
anniversary

in collaboration with:  
**Benelux** | Luxembourg Presidency  
of the Committee of Ministers



# SMART Benelux Business Forum

For the 1<sup>st</sup> time this year, the Chamber of Commerce of Grand Duchy of Luxembourg, in close collaboration with the members of the European business support network Enterprise Europe Network and many other professional business organisations at regional level, will organise the **SMART Benelux Business Forum**.

Launched during the **Luxembourg Presidency of the Benelux Union** with the aim to **strengthen economic ties between the 3 countries** and foster business relations between company managers in these proximity markets, this crossborder business forum represents an **intelligent business-mix** allowing its participants to discover the latest trends in the field of **circular economy**, to meet as well as to exchange with numerous economic actors and experts in the sector.



Take part in lively debates, benefit from the arranged business meetings and share your visions and best practices at cross border level!

## Highlights of the forum

- Participation of **key politicians from the Benelux Region** illustrating and exchanging their strategic views;
- **Ministerial round table discussion and thematic workshops** related to circular economy;
- **Professional and tailored business meetings** organised over the 2 days to stimulate business dialogues and foster sustainable partnerships;
- Participation of **numerous economic actors and experts** informing companies about the latest trends and initiatives;
- Organisation of a **company visit** to illustrate how to put into place the **principles of circular economy and exchange on concrete application methods** in practice;
- **Business networking** to complete your negotiations and exchanges of best practices in a friendly atmosphere.

## The Benelux Region at a glance



With a population of **28.5 million inhabitants**, the Benelux Region encompasses the three neighbouring countries Belgium, the Netherlands and the Grand Duchy of Luxembourg **over an area of 74,654 km<sup>2</sup>**. Characterised by its cross border activities and its economic integration, the Benelux Region stands for the **best example and source of inspiration for European Integration** in terms of economic and political **cross border cooperations**.

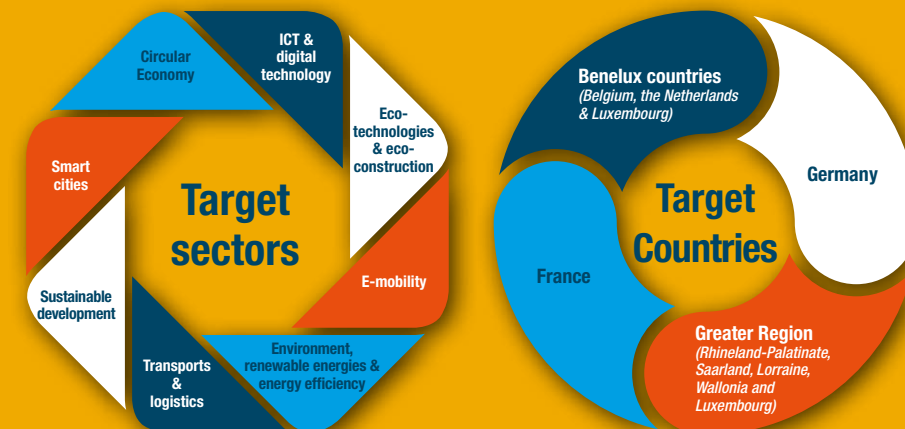
### Priorities of the Luxembourg Presidency of the Benelux Union in 2016

Luxembourg takes over in 2016, for the 2<sup>nd</sup> time since the new Benelux Treaty entered into force in 2012, the **Presidency of the Benelux Committee of Ministers**.



With the aim to support crossborder activities and to remove the remaining obstacles for businesses and consumers, the annual action plan put forward gives special focus to the **safety of people and commuters, mobility, environmental protection, energy & transport, climate change and energy efficiency**. The completion in the Benelux internal market will allow businesses and citizens to take full advantage and exploit the benefits of a real internal market.

Within this perspective, the **SMART Benelux Business Forum** focuses on priority sectors striving for a more sustainable and inclusive economy:



## Intensify your business relations and expand your contacts!

Complementary to the inaugural round table and the proposed thematic workshops, companies have the opportunity to participate in the **international business meeting platform "b2fair®- Business to Fairs"**, enabling participating companies to establish long lasting business relationships as well as develop a partner network in the Benelux countries, the Greater Region and the other associated neighbouring regions.



By supporting the development of the first business contacts, this compact and unique business platform offers the opportunity to study, in a simple and efficient way, the profiles of participating companies in advance and to meet their counterpart physically at the event.

## Register online!

One click away from new international business opportunities. 6 simple steps with



- B** Visit the **www.b2fair.com/beneluxforum2016** website to participate in the b2fair business meetings!
- 2** Click on « Registration » in order to register your company profile online and to define your programme as well as your meeting requests.
- F** Easy and quick, the online registration will take only a few minutes. After validation by your local partner organisation, your profile will be published and displayed in the online catalogue of the event.
- A** After receipt of your access codes, go to the section *My b2fair* and proceed to the booking of your individual business meetings.
- I** Indicate your preferences during the selection of your meetings with potential business partners. Your requests will be arranged according to your specific requirements and common interests. A few days prior to the event, you can download your appointment schedule in PDF format or import the arranged meetings directly in your personal agenda.
- R** The D-Day, participate in the opening round table and meet your potential business partners during 30 minutes' face-to-face meetings and explore together different opportunities of mutual cooperation.