

Introduction

Born in 1970 in Paris, Jean-Claude Berens lived since his earliest days in Luxembourg. He is a nonprofessional photographer documenting the decay of urban and industrial structures across Luxembourg, France and Germany. There is an undercurrent of haunting, solemn nostalgia in his photographs, with his often formal compositions and almost painterly rendition of light perfectly conveying the mood he finds in his subjects. His work is reminiscent of Simon Marsden's series on supposedly haunted sites in England, and like Marsden, he uses a special technique of photography that has proven an uncanny match for his theme. He has developed a love for decay because he realized there is actually tremendous beauty in decay. And indeed, Jean-Claude has a lot of beauty in decline to show, with a variety of picturesque subjects.

His explorations have taken him into old, disused burial crypts, abandoned farmhouses, medieval castles and a multitude of mothballed industrial sites. He has got into this type of photography while privately researching the history and culture of Luxembourg and of his ancestors. Though born in Paris, Jean-Claude grew up and still resides in the tiny but once heavily industrialized country of Luxembourg. Rich in iron, Luxembourg had a profusion of mines and smelters from the latter nineteenth century to the end of the twentieth. Many of these sites have now been closed down and abandoned.

He is an artistic photographer since the age of 13, when he shot black and white and had his own darkroom. Jean-Claude considers himself entirely self-taught, easily coming to understand digital photography thanks to his background in analogue photography and his professional role as an IT network and security specialist. He considers Ansel Adams and Buddhist philosopher Shantideva his visual and spiritual mentors, and indeed there is a very Buddhist sensitivity to impermanence in his photographs. He became known for his photographs through his website, UrbanVisions and after several exhibits on the theme, published a book.

Photography is a challenge and adventure for Jean-Claude, who notes that his most memorable photographs are those where he entered a site and was able to take only one shot. Jean-Claude has come to prefer a subtle, realistic style of HDR imaging, just enough to bring out the richness of detail in the scene. His photography has attracted a strong following over the Internet, and a series of them have been used as covers for crime thrillers. The images have an extraordinary quality to them, eerie yet not morbid, depicting very static subjects yet inviting dynamic exploration of the frame, demonstrating how a photographer can adopt a technique and find his 'voice' in it. Most of all, they are very evidently the products of a deep passion. "I think now that my two passions, decay and photography, are deeply interdependent," says Jean-Claude. "I could continue one without the other, but this burning passion, this deep love for those places, abandoned by the crowds, so full of serenity, would not be the same if I could not bring back some glimpses of decay and impermanence in a life where we all grasp for a permanence we could never reach."

Curriculum Vitae

Exhibitions

Erinnerungen	Date: 23 September – 16 October 2016 Place: Tuchfabrik (Trier, D) Organizers: Fotografische Gesellschaft Trier
Konscht am Minett 10	Date: 30 June – 10 July 2016 Place: Hall Paul Wurth (Fond-de-Gras, L) Organizers: Ville de Differdange
Il était une fois le fer, Il y a encore les hommes	Date: 22 June – 13 July 2014 Place: Galerie du Théâtre (Esch-sur-Alzette, L) Organizers: Ville d'Esch-sur-Alzette & Théâtre
Tempus Fugit	Date: 9 January – 9 February 2014 Place: Espace H2O (Differdange, L) Organizers: Service Culturel Differdange
Exposition Collectif Image	Date: 6 April – 7 April 2013 Place: Salle Polyvalente (Villers-la-Montagne, F) Organizers: Collectif Image
The Beauty of Decay	Date: 29 June – 8 July 2012 Place: Centre Culturel Kulturfabrik (Esch/Alzette, L) Organizers: Centre Culturel Kulturfabrik
Konscht am Minett 5	Date: 9 July – 17 July 2011 Place: Hall Paul Wurth (Fond-de-Gras, L) Organizers: Ville de Differdange
Salon de la Photo Villers-la-Montagne	Date: 02 April – 03 April 2011 Place: Salle Polyvalente Villers-la-Montagne Organizers: Collectif Image Partner: Commission Culturelle de Villers la Montagne Extras: Lecture about the philosophy of Photography
Konscht um Bau 2	Date: 16 October – 17 October 2010 Place: Am Huelegärtchen – Clemency (L) Organizers: Community of Artists
Vernissage Saint-Petersbourg 2010	Date: 10 September – 2 October 2010 Place: Central Exhibition Hall "MANEGE" (RU) Organizers: CEH "MANEGE", EC "REAL" Partner: Russian Union of Photoartists Extras: Masterclass in Photography

Konscht an der Kapell	Date: 16 October – 18 October 2009 Place: Old Church Roodt/Syre (L) Organizers: Municipality of Betzdorf
Visions Paralelles	Date: 11 September – 29 November 2009 Place: CHEM (Esch-sur-Alzette – L) Organizers: Administrative Board and Management of CHEM
Konscht um Bau	Date: 22 November – 23 November 2008 Place: Rue de l'Eglise – Garnich (L) Organizers: Community of Artists
Mediatheque de Taverny	Date: August 2008 Place: Taverny (F) Organizers: Municipality of Taverny

Publications and Interviews

Echo (2014 / 01)	Type: National Magazine from Luxembourg Feature: 1 page including pictures and an introduction
Glanzvoll Magazin	Type: Seasonal Magazine about cultural highlights Feature: 4 pages including pictures and an interview
Kellerman - Vina	Feature: Bookcover for Jonathan Kellerman
El viaje americano	Feature: Bookcover for Ignacio Martínez de Pisón
Fotoritim Almanac 2012	Type: Turkish Online Photo Magazine Feature: 14 pages with several double trucks
RTL Television	Type: Interview about photography on 20vir Kultur Feature: Interview as a photo artist
Revue N° 43 (22/10/12)	Type: Weekly magazine in Luxembourg Feature: Feature about my photography (8 pages)
Luc Deflo: Ademloos	Feature: Bookcover for Luc Deflo
This Dark Endeavour	Feature: Bookcover for Kenneth Oppel
Revue N° 19 (09/05/12)	Type: Weekly magazine in Luxembourg Feature: Industrial Photography
Quarantine: The Loners	Feature: Bookcover for Lex Thomas
Bloed op het palet	Feature: Bookcover for Leistra

Revue Technique 03/10	Type: Magazine Feature: Double truck and mention as best architecture photographer of the month
Captured	Feature: Bookcover for Neil Cross
Beauty in Decay	Type: Book from Jeremy Gibbs Feature: Several Pictures
RTL Television	Type: Interview about photography Feature: Several Pictures
The Complete Photographer	Type: Book about photography by Tom Ang Feature: Interview and Portfolio as one of the best architecture photographers
A Rush of Blood	Type: Bookcover for Quintin Jardine
Skinners Ordeal	Type: Bookcover for Quintin Jardine
PhotoXplorers	Type: TV report on Discovery Channel Feature: Interview and Pictures
Control	Type: Bookcover for John Maken
Digital Photographer	Type: Photography Magazine Feature: Interview, Cover and Portfolio
The Snowman	Type: Bookcover for Jo Nesbo
Blue Canvas Magazine	Type: Art Magazine Feature: Several Pictures
Nemesis	Type: Bookcover for Jo Nesbo
The Devil's Star	Type: Bookcover for Jo Nesbo
Redbreast	Type: Bookcover for Jo Nesbo
The Redeemer	Type: Bookcover for Jo Nesbo
SR Kulturspiegel	Type: Cultural TV Show Feature: Interview about photography, Pictures

François Besch

From Wikipedia, the free encyclopedia

François Besch (born 1963 in Esch-sur-Alzette) is a Luxembourgish photographer and artist.

Contents

- 1 Biography
- 2 Work
 - 2.1 Recent exhibitions
- 3 References
- 4 External links

Biography

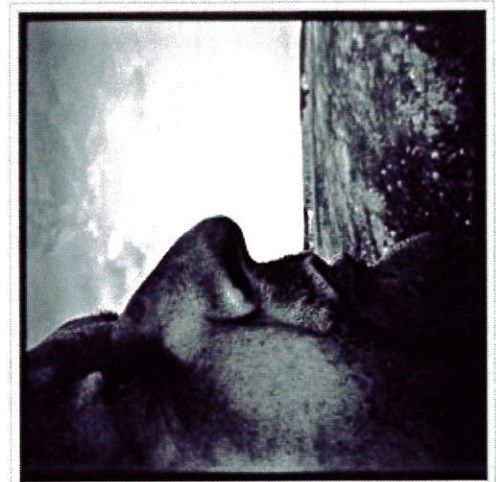
Besch was born on 11 April 1963 in Esch-sur-Alzette. He ranks amongst the pioneers of smartphone art photography. The autodidact is living and working in Bivange since 2006.

Work

Besch's photographic work is complex and multi-faceted. In his nature and landscape shots, his primary interest is in conveying feelings or moods, creating visual poetry. Besch has also applied himself to portrait, street and experimental photography since the 1980s. He uses classic cameras and also the smartphone. In 2011, Besch hosted the first photographic exhibition in Europe (Luxembourg) in which the photographs had been created using the Hipstamatic application for iPhones.

In 2013 POST Luxembourg^[1] acquired five of his works – portraits of wild mushrooms – which were used to print a series of postage stamps. They were the first official postage stamps in the world to use photographs which were not taken with conventional cameras.

Besch is also known for his smartphone portraits of personalities, among them other photographers John G. Morris, Lucien Clergue^[2] and David Hamilton.



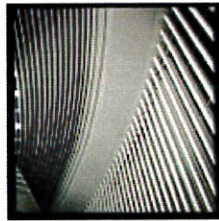
Hipstamatic self-portrait



David Hamilton



Germaine Damar



Philharmonie
Luxembourg



Joshua Tree

Recent exhibitions

- 2011: *Down here | Up there*, Galerie Terres Rouges, Esch-sur-Alzette
- 2012: *Money (The Mobile Museum)*, Mudam, Luxembourg
- 2012: *Poetic Renaissance*, Galerie Clairefontaine (Espace 1), Luxembourg

- 2013: *Von Glückspilzen und anderen Lichtwelten*, Galerie Clairefontaine (Espace 2), Luxembourg^{[3][4]}
- 2013: *Let it Shine*, Soho Gallery for Digital Art, New York
- 2013: *Multilingual Teens*,^[5] Place Guillaume II (Knuedler), Luxembourg
- 2013: *The Story of the Creative*, See.Me Exhibition Space, New York
- 2014: *Salon d'automne du Cercle artistique de Luxembourg*
- 2015: *BeNeLux*, Galerie bij de Boeken, Uft, Netherlands^[6]
- 2015: *Dialogue III*, Centre Baclesse, Esch-sur-Alzette, Luxembourg
- 2015: *Six Lives in Photography*, Photomeetings Luxembourg^{[7][8]}
- 2016: *Luxembourg Art Week 2016*, Salon d'automne du Cercle artistique de Luxembourg

References

1. Book of stamps – Luxembourg Mushrooms (http://www.postphilately.lu/en/timbres/-/asset_publisher/1TTXCLVbEoFz/content/4e-emission-en-2013-02-un-carnet-de-timbres-postocollants-les-champignons-du-luxembourg)
2. Porträt of Lucien Clergue on the website of *France Inter* (<http://www.franceinter.fr/personne-lucien-clergue>)
3. *Tageblatt* (http://www.reportagen.net/art/photo/tageblatt_23032013.jpg)
4. *Revue* (<http://www.reportagen.net/art/photo/revue10042013.pdf>) (PDF; 4,3 MB)
5. *Multilingual Teens* on the website of Luxembourg University (<http://infolux.uni.lu/houfreg-op-ons-meisproochegeket>)
6. *Galerie bij de Boeken* (http://www.galeriebijdeboeken.nl/galerie.php?function=current_expo&nr=2)
7. *Delano* (http://delano.lu/ten_things_to_do/ten-things-1-8-sept-2015?thing=3)
8. *Revue* (<http://www.revue.lu/photomeetings/>)

External links

- Official website (<http://www.francoisbesch.net>)
- François Besch on Photography Now (<http://www.photography-now.com/artist/francois-besch>)



Wikimedia Commons has media related to ***François Besch***.

Retrieved from "https://en.wikipedia.org/w/index.php?title=François_Besch&oldid=751629248"

Categories: Luxembourgian artists | 1963 births | Living people | Luxembourgian photographers | People from Esch-sur-Alzette

- This page was last modified on 26 November 2016, at 22:34.
- Text is available under the Creative Commons Attribution-ShareAlike License; additional terms may apply. By using this site, you agree to the Terms of Use and Privacy Policy. Wikipedia® is a registered trademark of the Wikimedia Foundation, Inc., a non-profit organization.



Luc Ewen

né à Luxembourg en 1959

1980 Stages photographiques à l'INEP, Marly le Roy, (F)

1982 Ecole des Arts et Métiers,

1983 Section Arts Graphiques Luxembourg

EXPOSITIONS (sélection)

1986

Exposition du Prix National de la Photographie, Esch/Alzette, (Luxembourg)

1987

Galerie Vel, Paris, (F)

Biennale de la Jeune Peinture Luxembourgeoise, Théâtre Municipal, Esch/Alzette, (Luxembourg)

Haus Metternich, Coblenz, (D)

1988

Galleri Lyn & Torden, Aarhus, (Danemark)

Ewen et Koenig, Centre Culturel Français, (L)

1989

Traces, Korschhaus Beim Engel, Luxembourg

1990

Biennale Internationale de la Photographie d'Art et de Recherche, GERMS, Paris, (France)

Fotogaleri Cultureel Centrum, Hasselt, (B)

1991

ZUT, Korschhaus Beim Engel, Luxembourg

1992

Non-Lieu(x), Tutesall, Luxembourg

Galerie Nei Liicht, Dudelange, (Luxembourg)

1993

Regards sur la recherche photographique luxembourgeoise, Galerie Vrais Rêves, Lyon, (F)

Estival 93, Hôtel du Musée, Arles, (F)

Galerie Vrais Rêves, Lyon, (F)

1994

Prévision du Passé, Mémoire du Futur, Tutesall, Luxembourg

Il faut rêver!, 44 Auteurs de la Galerie, Galerie Vrais Rêves, Lyon, (F)

10 Ans Café-Crème Magazine, Galerie Nei Liicht, Dudelange

Ewen, Koenig, Medinger, Herling, Galerie Municipale, Walferdange (L)

Salon des Critiques, Théâtre Municipal, Esch-Alzette (L)

1995

Lieux et Non-lieux, mission photographique, Tutesall, (L)

Photomedium Art Galleri, Wroclaw (Pologne)

L'Homme de Blar, Korschthaus Beim Engel, (L)

1996

Regards sur la photographie française, Photomedium Art Galeri, Wroclaw par Galerie Vrais Rêves, (Pologne)

1996

Paysage-Paysages, Galerie Vrais Rêves, Lyon (F)

1997

Pamięć Mnoga, Galeria Sztuki, Kłodzko (Pologne)

1997

Des arbres, du bois, des artistes, Musée des Beaux-Arts de Chambéry par Galerie Vrais Rêves, (F)

Biever-Risch Galerie, Luxembourg (L)

L'art contemporain au Grand Duché de Luxembourg, Espace Borschette Bruxelles (B)

1998

Schneider Museum, Ashland, Oregon, (par Galerie Vrais Rêves,) (USA)

Architecture - photographie, Galerie Clairefontaine Espace 2, (Luxembourg)

Si loin si proche, Espace Van Gogh, Arles, (F)

Galerie d'Art contemporain Am Tunnel, Banque et Caisse d'Epargne de l'Etat, (L)

1999

L'Homme de Blar, avec Jean-Luc Koenig, Galerie Vrais Rêves, Lyon, (F)

2000

L'Homme de Blar, avec Jean-Luc Koenig, Musée Nationale d'Histoire Naturelle, (L)

2001

Objectif-Subjectiv, La photographie et la peinture, Cercle Artistique, Théâtre d'Esch-sur-Alzette, (L)

Limit sense limits, Art contemporani Luxemburg-Catalunya, Chapelle du Rham (L), et Casa Elizalde, Barcelona (E)

Triennale de la photographie contemporaine luxembourgeoise, Banque et C.E. de l'Etat, (L)

2002

Triennale de la photographie contemporaine luxembourgeoise, Arsenal, Metz (F)

2003

B/C2, Galerie d'Art et de Création, Bettembourg (L)

Salon d'Automne, Cercle Artistique, (L)

Galerie Nei Liicht, Dudelange, (L)

2004

Art in Beaufort, Beaufort (L)

Biennale Max Goergen, Wilwerwiltz, (L)

2005

"Pola[phages]", CIRK, Quintenas, (F)

Salon d'Automne, Cercle Artistique, (L)

2006

Artespace, Bruxelles, (B)

Biennale Max Goergen, Wilwerwiltz, (L)

2007

SKVOZNIAK, Luxembourg et Grande Région, Capitale Européenne de la Culture 2007

TORTUGA, Galerie Vrais Rêves, Lyon, (F)

SIXTHFLOOR, Neimillen, (L)

2008

"LIEUX URBAINS", Galerie Schlassgoart, Esch-sur-Alzette, (L)

2009

Kunst & Zwalm, Zwalm, B

Galerie Cap, L

"Lost Memories", Galerie Nei Liicht, Dudelange, (L)

2010

C'est du Dada, Mierscher Kulturhaus, Mersch, (L)
avec Ole Perregaard (poèmes) et Rol Schroeder (peintures)

2011

CAL Photo, Les photographes du Cercle Artistique du Luxembourg, Abbaye de Neumunster, (L)
"The Zeppelin Story", l'Orangerie, espace d'art contemporain, Bastogne (B)


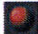



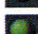
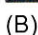

2013



"Les lauréats du Prix Grand-Duc Adolphe de 1947 - 2012", Abbaye de Neumunster, (L)
"Urban faces", Sixthfloor, Neimillen, (L)

COLLECTIONS

ArcelorMittal,
Ministère de la Culture,
Centre National de l'Audiovisuel,
Musée de la Ville de Luxembourg,
Banque et Caisse d'Epargne de l'Etat, (L)
diverses collections privées

BIBLIOGRAPHIE

-  Katalog, Museet for Fotokunst, Odense, (DK),
-  Gai Pied, Paris, (F),
-  CM-Magazine, (L),
-  Café Crème Magazine, (L),
-  La Fotografia, Barcelona, (E),
-  Estuaires, revue culturelle, (L),
-  Landscape in European Contemporary Photography, (L),
-  La photographie contemporaine luxembourgeoise, BCEE,
-  Si loin, si proche, catalogue, Arles (F),
-  Architecture - photographie, catalogue, Galerie Clairefontaine, (L),
-  L'homme de Blar, catalogue, (L)
-  Polaphages, Quintenas, CIRC, (F)
-  De nymphis, sylphis, pygmaeis et salamandribus, Galerie Nei Liicht
-  Chronique d'une éclosion, portfolio, éditions Chez Higgins, Paris, (F)
-  Skvozniak, livre-objet, édition limitée
-  Lieux urbains, catalogue Galerie Schlossgoart
-  Kunst & Zwalm, catalogue
-  Lost memories, livre, édition Centre d'Art Nei liicht
-  The Zeppelin Story, jeux de 10 cartons, l'Orangerie, espace d'art contemporain, Bastogne (B)

Ces ouvrages  sont disponibles et peuvent être commandés:  commande

PRIX

Prix de la National Republic Bank of New York, 1994
Prix de Raville, Dresdner Bank, Luxembourg, 2003
Prix Grand-Duc Adolphe, 2005
Premier prix Biennale Max Goergen, 2006

carine kraus
artiste peintre

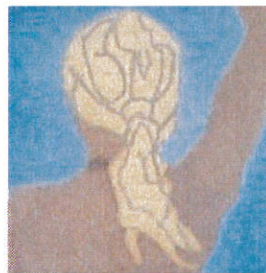
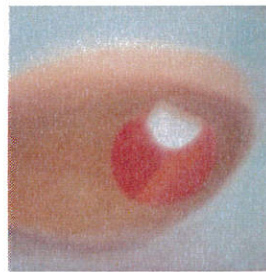
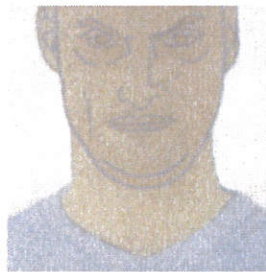
[intro](#)

[work](#)

[vita](#)

[news](#)

[info](#)



carine kraus
artiste peintre

études et activités professionnelles

1968-1972 Ecole Cantonale des Beaux Arts et d'Art appliqué, Lausanne
1972-1973 séminaire pédagogique à l'Université Lausanne
1972-1974 professeur d'éducation artistique, Lausanne
1974-1976 graphic design et film animé, Höhere Schule für Gestaltung, Basel,
1977-1981 graphiste en communication visuelle à Paris
1981-1983 atelier de peinture à Munich
depuis 1983 vit et travaille à Boudler
1990-1996 stages de lithographie à Trèves et Urbino
2014-2015 séjour à la Cité internationale des Arts, Paris

membre du Cercle Artistique Luxembourg
Gesellschaft für Bildende Kunst Trier
BBK Rheinland Pfalz
Kunstverein Junge Kunst Trier

prix

2013 Prix Grand Duc Adolphe, remis par son Altesse Le Grand Duc Henri
2007 Prix de Raville, Salon du CAL, Luxembourg
1994 Prix du LAC et Prix Electrolux, Salon du LAC, Luxembourg
1986 Lauréate du concours de façades de la Ville de Luxembourg
1972 Premier Prix de peinture, Premier Prix de lithographie,
Ecole Cantonale des Beaux-Arts, Lausanne

collections publiques et privées

Musée National d'Histoire et d'Art, Luxembourg
Musée d'Histoire de la Ville de Luxembourg
Ministère de la Culture de l'Enseignement et de la Recherche
Ministère des affaires étrangères
Bibliothèque Nationale Luxembourg
Ville de Luxembourg
Banque et Caisse d'Epargne d'Etat Luxembourg
Land Rheinland - Pfalz Ministerium für Wissenschaft u. Kultur
Schauspielhaus Mainz
Industrie u. Handelskammer Trier
Artothek Trier
Domaine Thermal Mondorf les Bains
Minerais S.A
KPMG Consulting
Société Electrolux
Arthur Andersen & Co

projets et séjours

2014-2015 séjour à la Cité internationale des Arts, Paris
2009 « Wachsen », BBK Saarland u. Künstler aus Luxemburg, Schwebsange

2007 Dance Palace, ateliers en résidence dans le cadre de Luxembourg et Grande Région, Capitale européenne de la Culture 2007
 2005 Bilateral Künstleraustausch Luxemburg-Saarbrücken « artmix1 »
 2004 installation et performance CAL en Générale, Espace Royal Monterey
 2001-2003 performances et installations avec le collectif « autour du bleu »*
 2001 réalisation d'un projet de peintures pour l'espace sauna du
 Domaine Thermal à Mondorf les Bains
 1999 symposium de gravure, Göteborg
 1997 « Rencontres » Altes Schloss Dillingen D.
 1997-1998 séjour à la Cité internationale des Arts, Paris
 1988 réalisation de la façade du Hall Omnisports, Bonnevoie

* Gudrun Bechet, Pina Delvaux, Flora Mar, Carine Kraus, Doris Sander

expositions personnelles

2016 Galerie Palais Walderdorff, Trier
 2015 Cité des Arts, Paris
 2015 Berdorf, Sans Titre
 2014 Galerie op der Cap
 2014 Bananefabrik, Luxembourg
 2013 Centre d'Art Dudelange Galerie Dominique Lang
 2012 1 Galerij, Tallinn
 2012 Bannanefabrik, Luxembourg
 2012 Künstlermesse "KUNST direkt", Mainz
 2008 Galerie du château de Bourglinster
 2007 CPCA, Luxembourg
 2006 Crédit Suisse, Luxembourg
 2004 Espace Royal Monterey, CAL en Générale
 2003 Galerie BC2, Bettembourg
 2002 Galerie de Luxembourg
 2002 Kulturhueff, Grevenmacher
 2001 Galerie Arche, Grevenmacher
 2000 Merzig D. Saarlandtag
 1999 CID Femmes Luxembourg
 1998 Galerie Cité Internationale des Arts, Paris
 1998 Galerie de Luxembourg
 1998 Galerie Junge Kunst Trier
 1997 Galerie Acht P.Q. Bonn
 1997 Galerie 96, Bourglinster
 1996 Galerie Sunnen, Luxembourg
 1996 Galerie Palais Walderdorff, Trier
 1995 Arthur Andersen & Co. Luxembourg
 1994 Centre Culturel Français, Luxembourg
 1994 Kanschhaus beim Engel, Luxembourg
 1992 Tufa, Trier

installations

2007 CPCA, Danz Festival Luxembourg, «re-venir au Luxembourg»
 2004 Espace Royal Monterey Luxembourg, «Fil blanc- Weisser Weg»
 *2002 *«Blaue Stunde» Bücherkasten Luxembourg,
 *2002 *«Blaue Stunde»Casino Luxembourg- Forum d'Art contemporain
 *avec le collectif « Autour du Bleu »: Gudrun Bechet, Pina Delvaux, Flora Mar, Carine Kraus, Doris Sander
 2001 Galerie Arche, Grevenmacher
 2000 Ballet avec la chorégraphe Françoise van den Broeck
 2000 Stadt Merzig, D.
 2000 Lellingen, «Iwwerbre'cken»
 2000 Barteshaus Hoffelt, «Jardins à suivre»
 1999 Tufa Trier «Briefkasten»
 1999 Citadelle de Montmédy, B.
 1998 Espace Paragon, Luxembourg

1997 Altes Schloss, Dillingen, D.
Velbert-Langenberg «Tuchführung»
1996 Ancienne Forteresse, Beaufort

performances

2008 « Artists Rooms » Bourglinster
2004 «Fil blanc-Weisser Weg» Espace Monterey, Luxembourg
*2002-2003 «voulez vous goûter?» "Mein Aldi Mon Cora De Lux",
Saarländisches Künstlerhaus Saarbrücken, Arsenal Metz,
Chapelle du Rham Luxembourg, Tufa Trier
*2002 «Fusswaschung» dans le cadre de«open house», Casino Luxembourg - Forum d'art contemporain
*2002 «blaue Stunde», Buchhandlung Bücherkasten, Luxembourg
*2001 «autour du bleu», Schläifmillen, Luxembourg
*avec le collectif « Autour du Bleu » (Gudrun Bechet, Pina Delvaux, Flora Mar, Carine Kraus, Doris Sander)
1996 «Hüllungen» Galerie Palais Walderdorff, Trier

Nathalie Noé Adam

Born in Luxembourg in 1980, lives and works in Berlin

Education

DNAP École Supérieure des Beaux Arts de Marseille

Specialisation in printing processes at the École Supérieure des Arts Visuels la Cambre Bruxelles

Exhibitions

2015

Aufzug zur Chirurgie, Spreehöfe Berlin (solo)

For Kids, with love, in collaboration with Future Voice, Galerie Westphal, Berlin

Auf der Suche nach sich selbst, K-Salon, Berlin

2014

Traqué, caché, quatre mois au bunker Eisekaul, Musée de la résistance, Esch-sur-Alzette, Luxembourg

For Kids, with love, in collaboration with Future Voice, Museum für Kommunikation, Berlin

2013

AIR exhibiton, Ausstellungsraum des Bundesministeriums für Unterricht, Kunst und Kultur, Vienna

2012

Creative Cities Collection, Fine arts exhibition, Barbican centre, London

Our own little party, Haus am Lützowplatz, Berlin

Hambri Printmaking Museum, for the presidency of Cyprus at the European Council, Cyprus

Alice in Wunder Land: in pursuit of the exotic; Kulturforum, Berlin

Golden trash... and fallen angels; Galerie Su De Coucou, Berlin

Saltimbanque; MARQ ; Clermont- Ferrand

Artmix6; Kulturbahnhof am Eurobahnhof, Saarbrücken

2011

Kunstpreis des Landkreises Trier Saarburg; Museum Glockengiesserei, Saarburg

Bang Bang, my baby shot me down; Galerie Su De Coucou, Berlin

Konscht am Minnëtt ; Fonderie Paul Würth, Differdange

2010

4th Beijing Biennial; Beijing China

Festival du Touquet; Le Touquet Paris Plage

2009

Hybridations et Métamorphoses; Urban Gallery, Marseille

Suites Urbaines; Urban Gallery, Marseille

30/30; Galerie für Malerei und Graphik, Berlin

I colori della migrazione; Liceo Artistico Statale Brera, Milano

2007

Diane et Judith , Galerie la Grande Bleue , Luxembourg(solo)

2006

Première vue 5ème édition; Passage de Retz, Paris

Festival Art in Beaufort, Luxembourg

22ème Biennale d'Esch, Luxembourg

2004

Is there someone in the bathroom ? , Espace Vidéol Puyricard (solo)

Is there someone in the bathroom ?, Galerie la Grande Bleue , Luxembourg (solo)

Works and projects

2013

AIR program and work presentation, Schloss Laudon, (with the support of the Bundesministerium für Kunst und Kultur Österreich and the Ministère de la culture Luxembourg), Wien

2012

Residence in CHHAAP foundation for printmaking, Baroda India

2011

Fresco for the company Dorf Müller GmbH, Düsseldorf

Fresco for private person, Hilden

AIR , "Artmix6", Luxemburg/Saarbrücken

2002-2003

Scholarship at the Universität der Künste Berlin

Marie-Pierre Kirpach-Speltz

Née en 1959 à Luxembourg
Vit à Bergem, Luxembourg, travaille à Bergem
Études : 1984 Maîtrise en Arts Plastiques Université des Sciences
Humaines de Strasbourg

Expositions collectives :
2013 Espace Beausite Arlon
2012 CAPe Ettelbruck
2012 Sixthfloor Koerich
2011 KUFA Esch/Alzette

Contact :
621 294680
mpspeltz@pt.lu



[retour](#)